

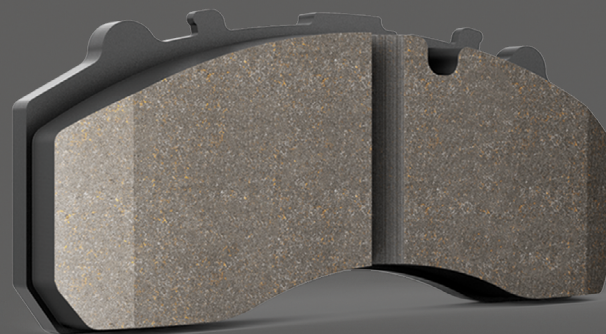


**THINK OF A BRAKE PAD THAT ENSURES SAFETY AND COMFORT DURING ALL YOUR COACH APPLICATIONS, IT'S FRAS-LE GRN TECH.**

Produced using a specialized copper free formulation and selected raw materials, FRAS-LE GRN TECH brake pads deliver peak performance while minimizing rotor and pad wear resulting in longevity and comfort.



**GRN TECH**  
COPPER FREE   
**GRNT 600.3**



Original  
Equipment  
Manufacturer



Asbestos  
Free





# GRNT 600.3

For Coach Applications



## CONTROL +

Superior performance in torque and stopping power; premium OE quality material.



## LIFE +

Outstanding durability, less rotor and pad wear.



## COMFORT +

V-Groove, Slot & Chamfers for minimizing noise and wear (when applicable).



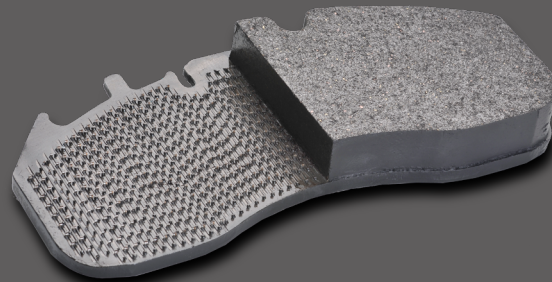
## ECO +

"N-Type" (Copper Free) friction material.



## STRONG +

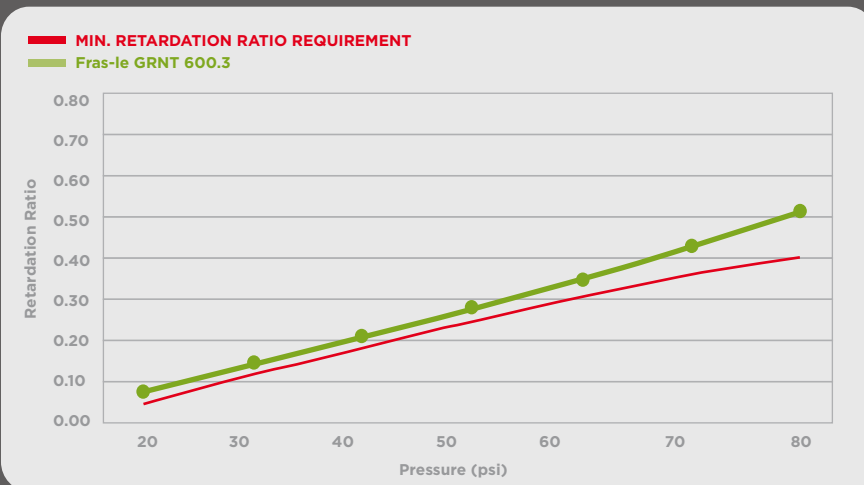
Superior structural integrity and attachment system.



ESTERVENE 11/2023

## FMVSS 121 RESULTS:

### Retardation Ratio

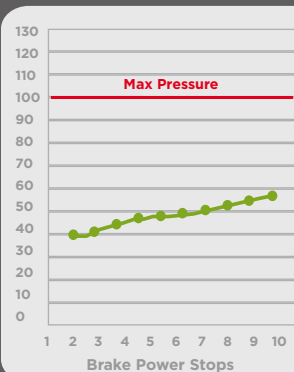


- Advanced Mechanical Retention System;

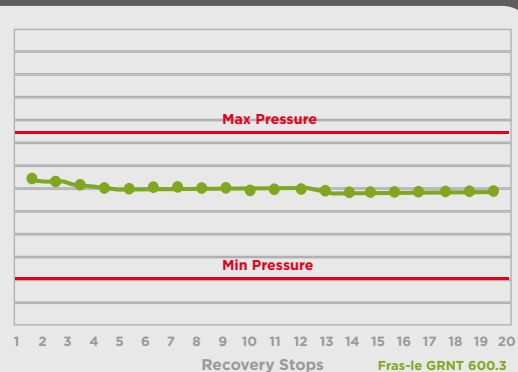
- OEM Quality Backing Plate;

- Large V-Groove\* prevents wear debris bridging under heavy duty conditions;

### Brake Power



### Brake Recovery



- FMVSS 121 & ECE R90 Certified;

- Premium hardware kit included.



\*The products images are for illustrative purposes only, features may vary according to the references ordered. For more information, please refer to the catalog, technical specifications are subject to changes without prior notice, please note there are different fitting kits (when applicable).

Air Chamber: T24  
 Gross Axle Weight Rating: 26,000 pounds  
 Rolling Radius (SLR): 20.8 inches



[www.fras-le.com/us-ca](http://www.fras-le.com/us-ca)

